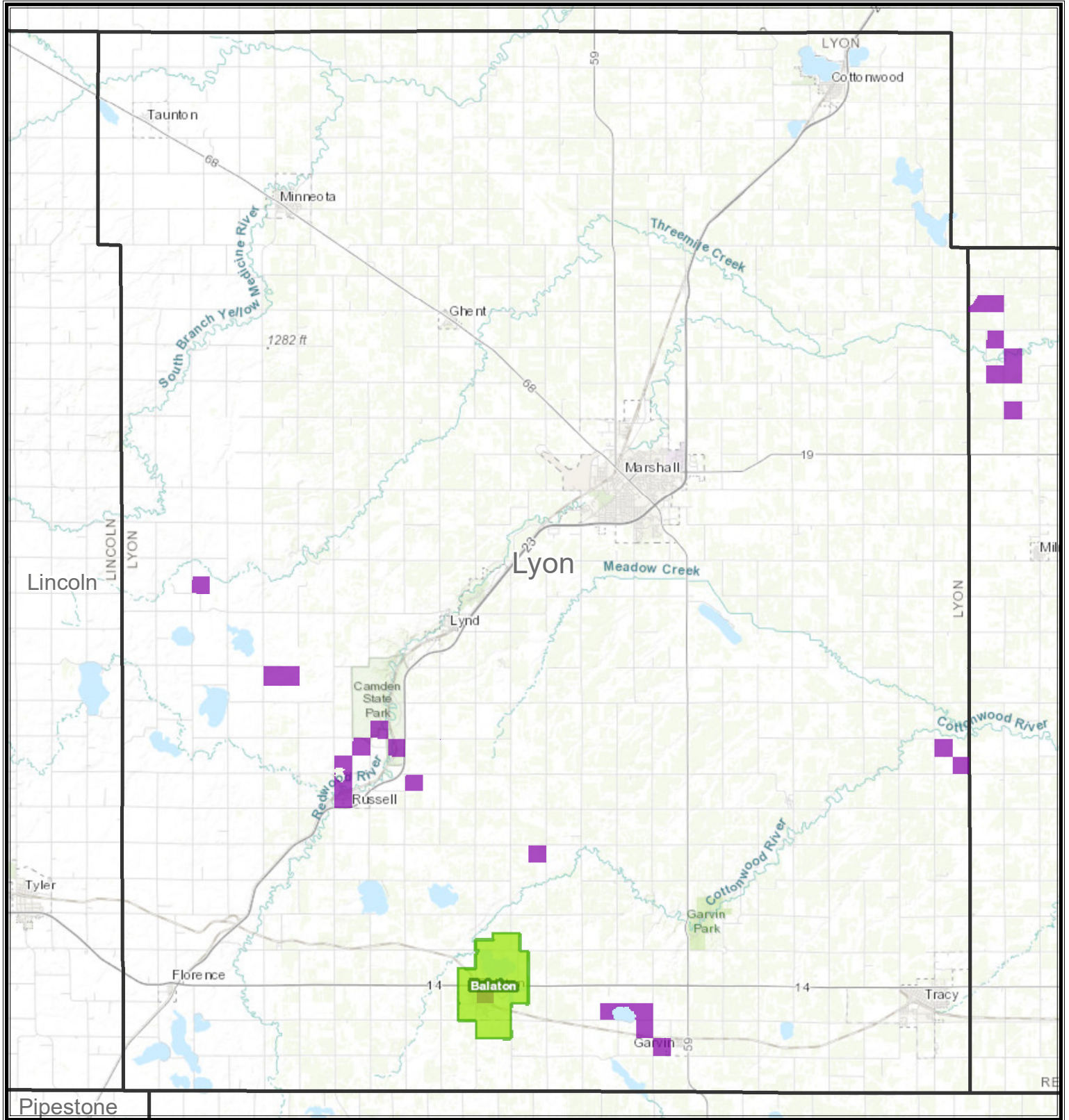


# Proposed Fall Nitrogen Fertilizer Application Restrictions 2018 for Lyon County



- Excluded Counties with Less than 3% Agriculture
- Climate Excluded Counties
- Drinking Water Supply Management Areas (DWSMAs) with Nitrate-N  $\geq 5.4$  mg/L
- Draft Statewide Fall Restriction (3/2018)

Service Layer Credits: Sources: Esri, HERE, Garmin, Intermap, increment P Corp., GEBCO, USGS, FAO, NPS, NRCAN, GeoBase, IGN, Kadaster NL, Ordnance Survey, Esri Japan, METI, Esri China (Hong Kong), swisstopo, © OpenStreetMap contributors, and the GIS User Community