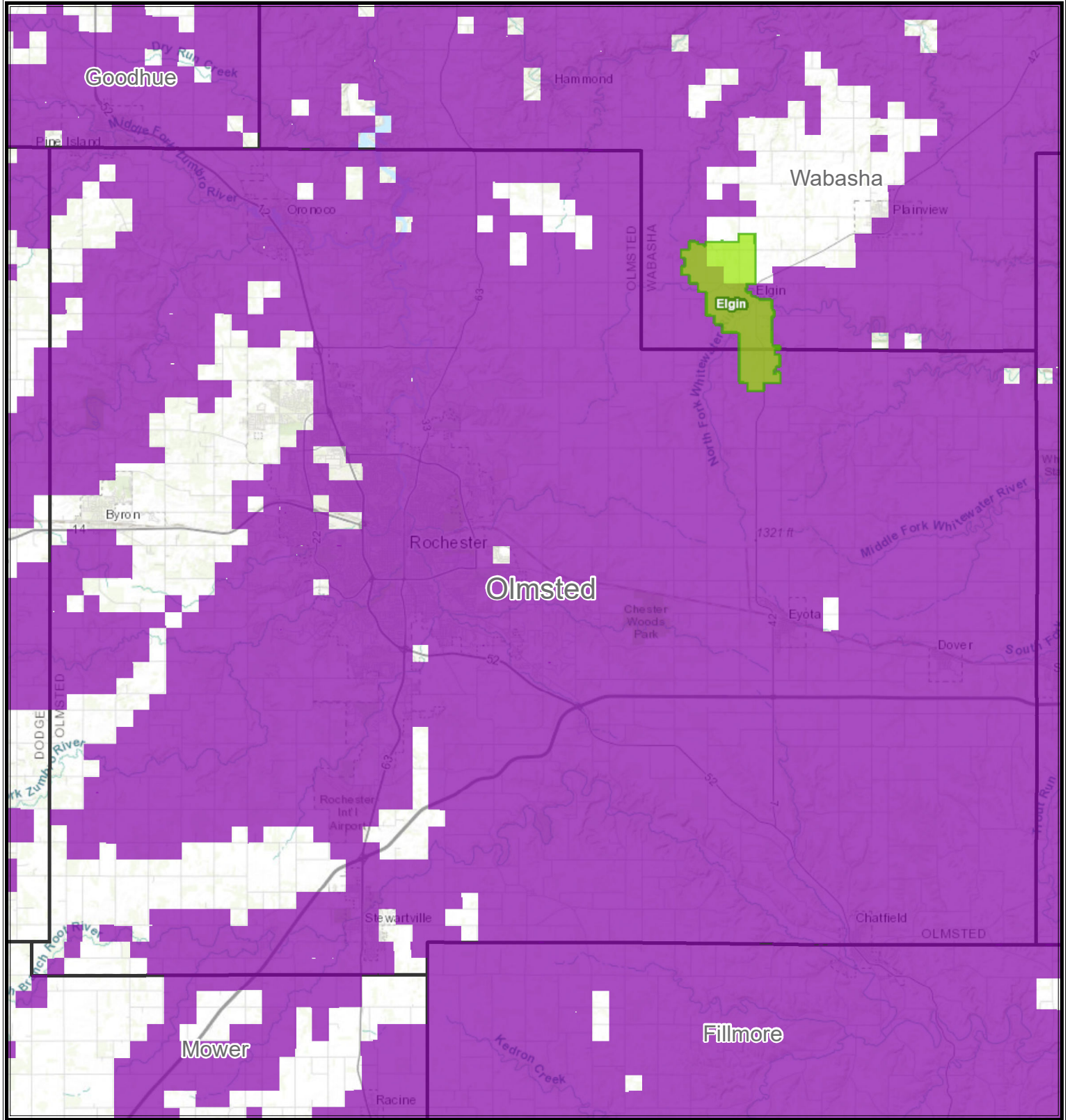


Proposed Fall Nitrogen Fertilizer Application Restrictions 2018 for Olmsted County



- Excluded Counties with Less than 3% Agriculture
- Climate Excluded Counties
- Drinking Water Supply Management Areas (DWSMAs) with Nitrate-N ≥ 5.4 mg/L
- Draft Statewide Fall Restriction (3/2018)