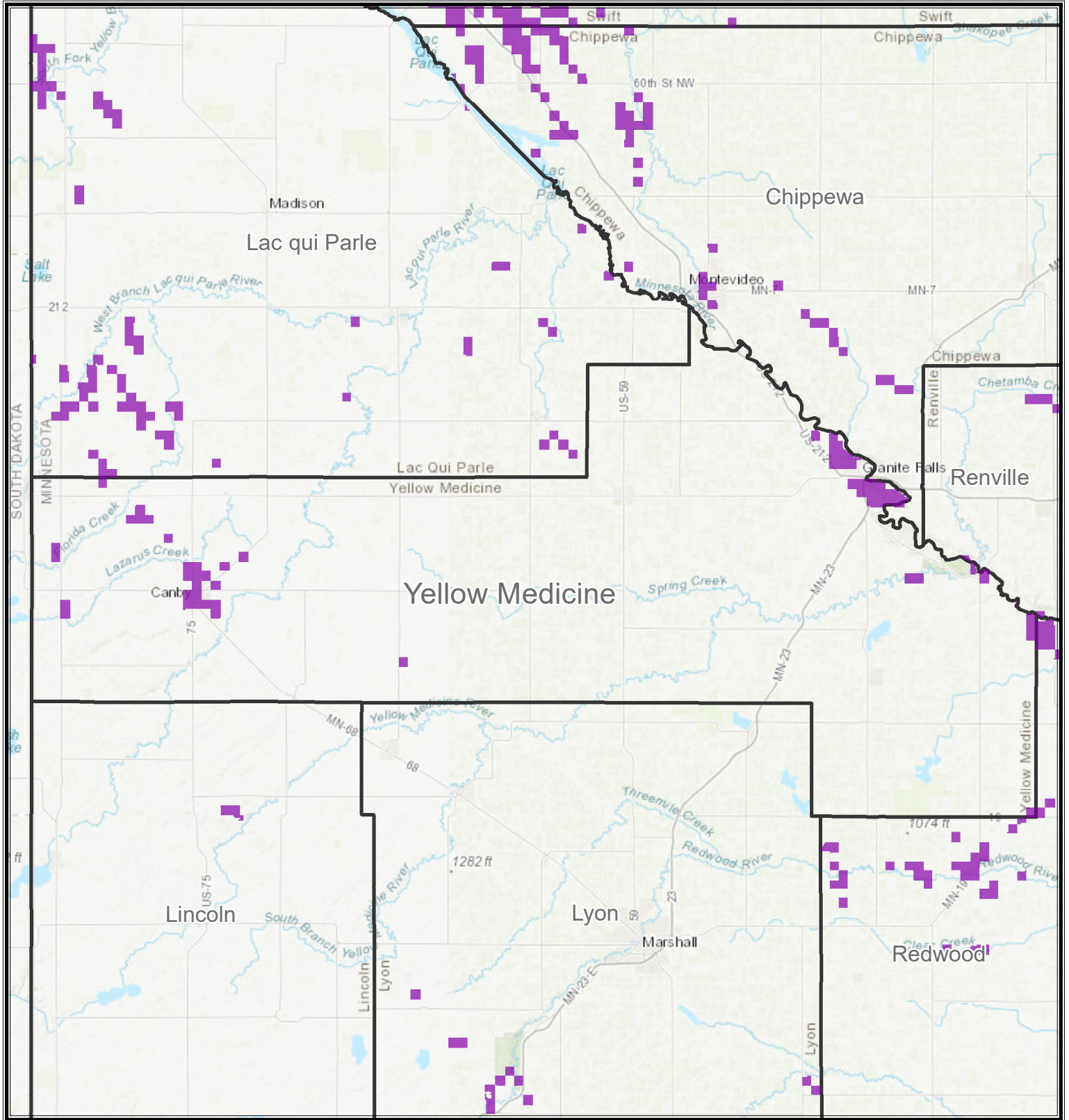


# Proposed Fall Nitrogen Fertilizer Application Restrictions 2018 for Yellow Medicine County



- Excluded Counties with Less than 3% Agriculture
- Climate Excluded Counties
- Drinking Water Supply Management Areas (DWSMAs) with Nitrate-N  $\geq 5.4$  mg/L
- Draft Statewide Fall Restriction (3/2018)